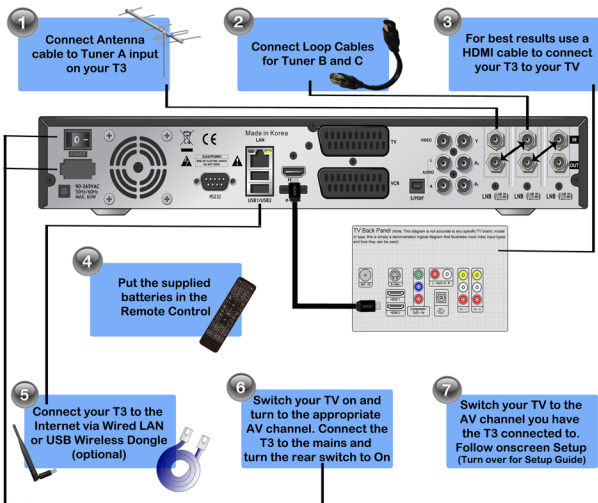




Welcome! Start Here >>

Thank you for purchasing the Beyonwiz T3, the most Advanced, Feature Packed PVR on the market! This guide will help you get up and running, to access further information on how to get the most out of your T3 please join the Beyonwiz community at www.beyonwiz.com.au/forum

Set up your T3 in 7 easy steps.



Got a Problem? No Worries!

The Best place to start is the Beyonwiz User Forums, there are a heap of how-to Guides, Hints and Tips and you can even register and ask a question where you will receive answers from other users who may have had similar issues. It is totally **Free** to join, just go to www.beyonwiz.com.au and click on the Forum link at the top of the page and then click on T3 under products.

If all else fails please lodge a support request at www.support.beyonwiz.com.au



This guide will take you through the basic setup of your Beyonwiz. Once you've completed these steps, the basic functions of your Beyonwiz will be ready for you to use. Most of the configuration choices you make can be changed after you complete the setup, so don't be concerned if you make a choice here that's not quite what you want.

In the setup screens, you can move between choices on the screen using the UP and DOWN buttons on the remote control, select different options for a setting using the LEFT and RIGHT buttons on the remote and also change on/off options using the LEFT and RIGHT buttons.

Once you've completed setting the options on a screen, press OK on the remote to accept those settings and move on to the next setup screen.



Starting your Beyonwiz

Make sure the Beyonwiz is connected to the mains and that the switch on the rear of the PVR is set to ON, now press the On button on your Remote Control or on the front touch panel.

If the message Booting doesn't appear on the Beyonwiz's front panel, press the POWER button on the remote control.

After a short delay you should see the Beyonwiz logo on your TV screen.

The logo may flash off and back on and you will see a booting spinner, this process could take up to 1min to boot from a cold start.

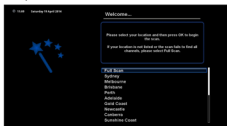
Step 1



Setting your time zone

Use the UP and DOWN buttons to select the time zone that applies to your area, and press OK to set it and move to the next screen. Your Beyonwiz will automatically adjust to Daylight Savings when it is needed.

Step 2



Scanning for digital TV services

If your location is listed please scroll to it and press "OK" on your T3 Remote, this will shorten the scan time as it only scans the frequencies used in your area. If your location is not listed or if you are unsure please select "Full Scan", it will take a little longer but it will ensure that you get the correct channels in your area. If you perform a location scan and you find that you are missing channels you can enter the Antenna Setup menu at a later stage and perform a full scan.

Step 3



Once your scan is complete you will get a message in the info box on the left hand side, simply press "ok" to move the next part of the set up.

Step 4



Internet Setup

The Beyonwiz is now ready to configure its Internet connection. Even if you don't want to have your Beyonwiz connect to the Internet, you still need to press OK here to move to the next screen.

T3 Set Up Guide



Internet Set Up Cont'

Step 5. Wired LAN Set up

(For Wireless LAN go to Step 6 or for no Internet connection go to Step 7)

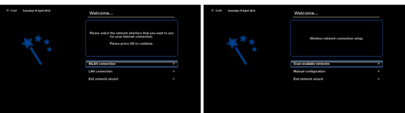
Wired LAN Set-up

If you want to connect your Beyonwiz T3 to the Internet and are using a LAN Cable leave both Use Interface and Use DHCP "On" and simply press OK, this should then give you a message that your internet is connected and list your T3's IP address. Press "OK" to move to the next screen. (Go to Step 8)



6. Wireless LAN Set up.

The T3 will automatically detect your Wireless Adapter if it is compatible, we recommend using the Beyonwiz WiFi USB Antenna available at shop.beyonwiz.com.au as it has been fully optimised for use with the T3. Select WLAN connection and press "ok", in the next screen click on Scan available networks.



Select the network you wish to join and press "ok".

Make sure that the encryption is correct, highlight and use the right / left arrow to change, WPA or WPA2 would cover most modern wireless routers.

Now enter your wireless password in the encryption key, you can use the buttons on your remote to type or press the "TXT" button to launch the onscreen keyboard. Once you enter the password press the "ok" button on your remote.

You should now get a successful message and an IP Address confirmation.

For troubleshooting network connections please visit our user forum and click on 'Networking your T3'. (Go to Step 8)



7. Skipping Internet Set up

Set-up Without Internet

If you do not want to connect your T3 to the internet at this time, don't worry you can easily set it up at a later time. Scroll down to 'Exit network wizard' and then press 'ok'.



Accessories



Wireless USB Keyboard with Mouse Pad.



Make your T3 a 4 Tuner PVR with a USB HDTV Tuner



External Storage



Mini Wifi Router (300mbps)

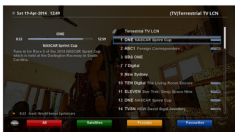


Wifi USB Dongle (300mbps)

T3 Set Up Guide



Step 8.
Your T3 basic Set up is complete, press 'ok'



Once the Scan is complete press OK and you will launch your Live TV channel list, scroll to any channel and press OK to launch Live TV



Live Tv with info bar



Graphical EPG

Problems? We are Here to Help!

If you are having problems with your BeyonWiz T3 the best place to start is our user Forums, just go to www.beyonwiz.com.au and click on the Forum link at the top of the page then scroll to the T3 section, here is where you will find troubleshooting information and a heap of how-to guides. If you don't find what you are looking for you can become a member and ask a question.

If you have tried the Forums and are still having problems or you need to make a Warranty Claim do not take your unit back to the place of purchase just yet, you will need to lodge a Support Request firstly at www.support.beyonwiz.com.au to obtain a Return Authority Number, once you submit the request you will hear back from our support staff usually within 24hrs.

IMPORTANT

PLEASE KEEP PROOF OF PURCHASE IN A SAFE PLACE AS YOU WILL REQUIRE THESE WHEN MAKING A WARRANTY CLAIM.

Ensure that the following conditions are followed when operating the equipment. Failure to do so may result in warranty being void.

Our goods come with guarantees that cannot be excluded under the Australian Consumer Law. You are entitled to a replacement or refund for a major failure and for compensation for any other reasonably foreseeable loss or damage. You are also entitled to have the goods repaired or replaced if the goods fail to be of acceptable quality and the failure does not amount to a major failure.

Power requirements: Ensure main power supply is 240v AC +/- 10%, 40W Max, 50Hz +/-5%.

- _ Do Not place the unit in a confined cabinet or cupboard without proper ventilation.
- _ To prevent shock or hazard risk Do Not place Liquid or Fluids near the appliance.
- _ Do Not place appliance in a dusty or wet location.

WARRANTY CONDITIONS

1. Where required by BEYONWIZ / DTC only the original invoice/receipt issued by the dealer will be accepted as proof of purchase.
2. BEYONWIZ / DTC may reject warranty claims on equipment which it believes to be illegally acquired or when the "owner" is unable to provide proof of purchase or where Security labels or serial numbers have been tampered with or removed.
3. The warranty covers only defects in the material and workmanship of the product for a period of 12months from the date of original purchase.
4. This warranty is on "Return to Base" basis. The owner is responsible for the delivery of the equipment to the point of purchase and for collecting the repaired or replaced equipment from the same location.
5. The warranty is void if failures arise as a result of any of the following. i) Abuse, misuse, physical impact, normal wear and tear. ii) Alteration or repairs carried out without written authorization from BEYONWIZ / DTC. iii) Upgrade that are not registered by BEYONWIZ / DTC. iv) Operating or maintained other than in accordance with the manual supplied.
6. This equipment will not be considered defective as a result of incompatibility with other equipment or accessories other than the ones supplied with the unit at the time of purchase.
7. This unit should be returned in its original carton and protective packaging or alternatively in a packing suitable to prevent damage. BEYONWIZ / DTC will not accept any responsibility for goods damaged whilst the goods are in transit.
8. Repair or replacement under the terms of this warranty does not give the right to extension or a beginning of a new warranty period. Repairs or replacements may be carried out with functionally equivalent reconditioned parts or equivalent part. Parts that have been replaced become the property of BEYONWIZ / DTC.
9. The customer acknowledges that no promise representation or undertaking has been given by BEYONWIZ / DTC or its dealer in relation to equipment other than as contained in this warranty.
10. A service charge will apply if the fault is not covered within the conditions of this warranty or if there is no fault found. The charge will be based on the current market rate.
11. BEYONWIZ / DTC are not liable for any other loss other than the unit itself.
12. Nothing contained in this warranty shall be read or applied so as to affect the right of the consumer in relation to the provisions of the trade practices act or other statutory rights provided by legislation of the state or territory. In the absence of applicable legislation this warranty will be purchases sole and exclusive remedy and neither BEYONWIZ / DTC nor its distributors or agents shall be liable for any incidental or consequential damages for breach of any express or implied warranty of this equipment.