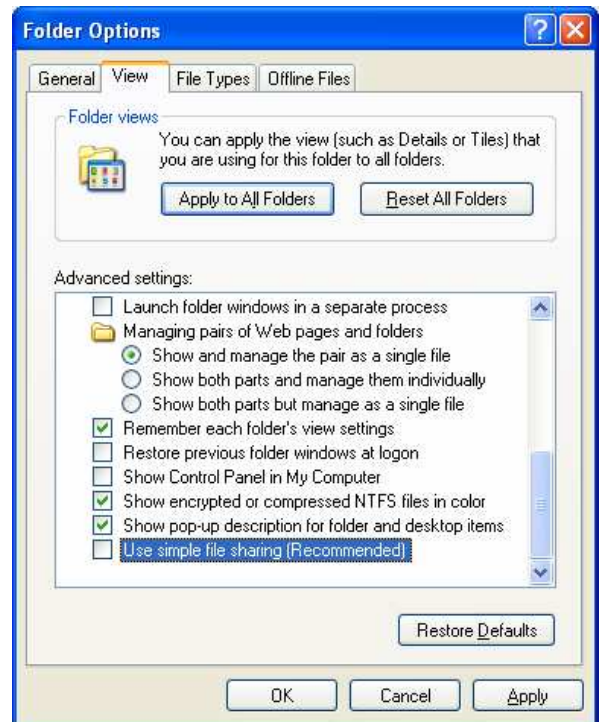


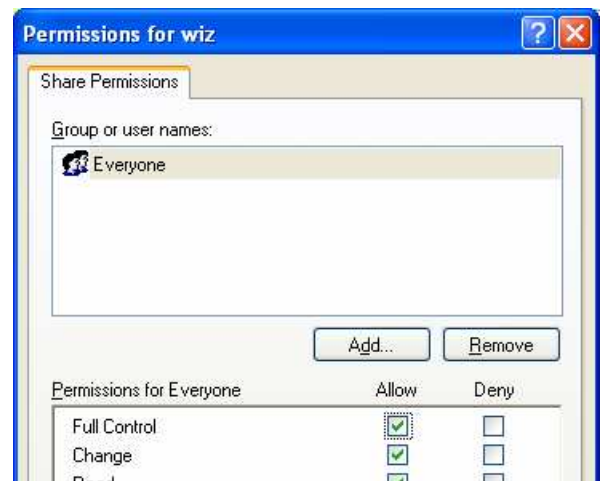
How to connect to shared files on Windows?

Note: The DP-S1, DP-P1 and DP-H1 can play various file formats for movies, photos via network To play files over the network, your PVR needs to be connected to a network – refer to “How do I use the Ethernet Network?” to put your PVR on the network. You also need to have a Windows PC with shared folders connected to the same network – refer to one of the “Setting up a Network...” documents to get your PC on the network. This tutorial will explain how to connect to Shared files on Windows

1. Switch on your **networked Windows PC**.
2. Log into your PC, then go to **Start – Control Panel – User Accounts** and double-click on it
3. Select **Create a New Account** – give the account the name **wiz**, then pick **limited** or **standard** account type (depending on OS)
4. Select the account you just created and choose **Create Password** and give it the password **wiz**
5. Open **Windows Explorer** and select from the top menu **Tools – Folder Options**, then select the **View** tab.
6. Scroll down the **Advanced Settings** list and Un-check **Use simple file sharing** (see image). then click on **Apply**
7. Browse to a folder you want to share (c:\wiz in this example), right-click on it and select **Sharing and Security**



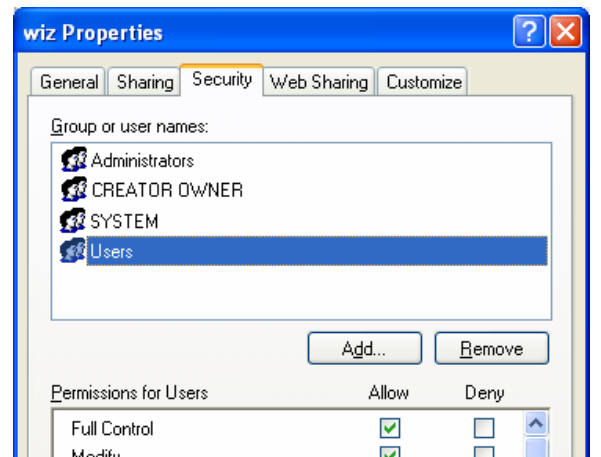
8. Select the **Share this folder** radio button, then select the **Permissions** button and select **Full Control - Allow** for **Everyone**, then click **OK**



9. Select the **Security** tab, highlight **Users**, then select **Full Control - Allow** and click **OK**

Note: This configuration should allow you to view shared files on PC from your PVR, as well as copy files to your PC from your PVR.

There needs to be some files the PVR can view or play to proceed to the next part of this exercise.



10. Leave your PC running and Switch on the Beyonwiz PVR and wait for a picture to show on the screen.
11. Press the **SETUP** button on the remote and use the **ARROW** keys to navigate to **Network** on the top bar, and then use the **ARROW** keys to highlight **Windows Sharing** and press **OK**.
12. Press **OK** to select **Default Username** and enter **wiz** as the username, then select **Save and Exit**.
13. Use the **ARROW** keys to highlight **Default Password** and enter **wiz** as the password, then select **Save and Exit**.
14. Press the **FILE PLAY** button (next to **LIVE**) on the remote to bring up the **Media Player**.
15. To play a file from the network, use the **◀▶ ARROW** keys to highlight **Movie** and the **▲▼ ARROW** keys to highlight **Network** and press **OK**
16. Press the **RED** button to **Scan** the network and you should see the Windows PC from steps 1 – 10.



*Note: You can use the **GREEN** button to **Find PC**, and the **YELLOW** button to **Clear All PC** listings (it wont erase any data)*



17. Use the **▲▼ ARROW** keys, then press **OK** to select the **PC** with the **shared** folder.
18. Use the **▲▼ ARROW** keys, then press **OK** to select the shared folder.



19. You should see a list of available media files, highlight the file you want to play using the **▲▼ ARROW** keys and press **OK**.

*Note: Use the **◀▶ ARROW** keys to highlight **Music** or **Photo** to access those types of files from your Windows Share.*

